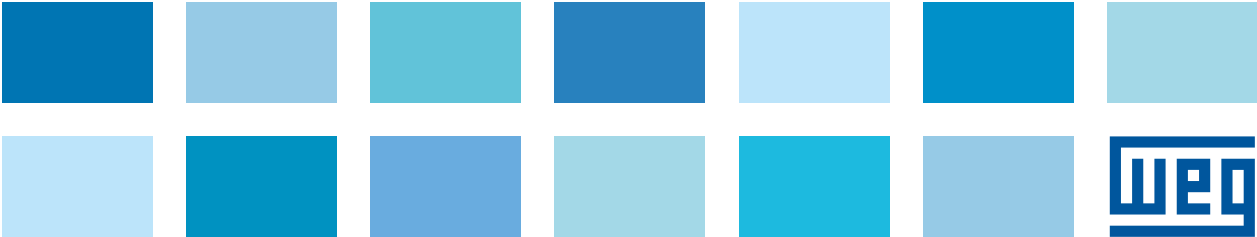




Solutions for the Oil & Gas Industry



The WEG Group



At WEG you'll find a full range of LV & MV electric motors, generators, variable speed drives, soft-starters, PLCs, switch and controlgear, transformers and industrial paints specifically designed for the Oil & Gas Industry. In addition to supplying state-of-the-art products, WEG has the expertise to serve your company with technical support and prompt service all over the world.



WEG Serves the Oil & Gas Industry Globally

WEG is a globally-recognized supplier of premium electric products for the industry. Our global structure allows us to be closer to our Oil & Gas customers. Over 32 subsidiaries established in key countries are prepared to provide you with technical and commercial support; our manufacturing plants strategically located in the main markets can serve you with short deliveries; and our network of over 1,250 Authorized Service Agents located in the five continents are fully equipped to give you prompt after sales and service support.



WEG at a Glance

- US\$ 3.1 billion yearly turnover (2012)
- Manufacturing plants in 9 countries
- Over 26,000 employees

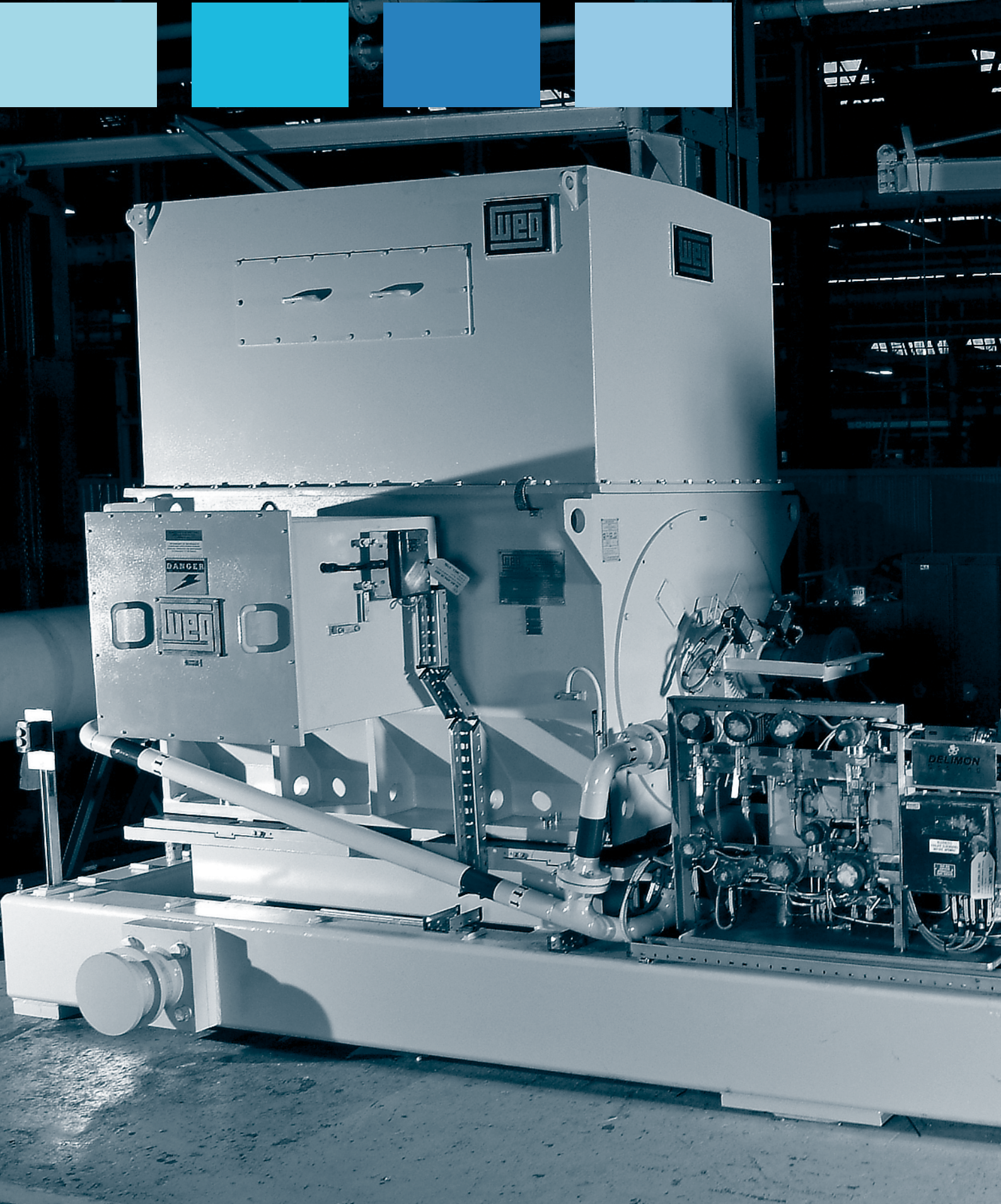
Global Product Certifications



Marine Approvals



Electric Motors



Efficiency and Reliability for the Industry

Manufacturing state-of-the-art LV & MV electric motors is what WEG has been doing since its foundation. Regardless of the market segment, the company continues to dedicate extensive resources and effort in order to produce long-lasting electric motors so as to ensure reliability of production for your industry. Special attention has been given to the design of suitable motors for the Oil & Gas Industry in various parts of the world. This is what sets WEG apart as the manufacturer of industrial motors compliant with the most demanding Oil & Gas application requirements. Flexible mechanical design associated with high operational reliability make our motors easy to be installed with extremely low downtime and service maintenance.



Our team of engineers has conducted extensive technical research to produce suitable products complying with the most respected industry standards such as API 541, API 546, API 547 and IEEE 841, according to both NEMA or IEC.

WEG full range of LV & MV

W22

LV / MV General Purpose TEFC Motors



Output: up to 500 kW
Voltage: up to 6,600 V

** NEMA or IEC designs*

W22Xn

LV Non-Sparking TEFC Motors



Output: up to 500 kW
Voltage: up to 1,000 V

** NEMA or IEC designs*

W22Xd

MV Flameproof TEAAC Motors



Output: up to 4,500 kW
Voltage: up to 11,000 V

** NEMA or IEC designs*

TGA & MGV Lines

High Torque Motors for Drilling



Output: up to 1,120 kW
Voltage: up to 690 V
Cooling: by ducts or blower

** NEMA or IEC designs*

WGM

LV / MV General Purpose Water Jacket Cooled Motors



Output: up to 3,150 kW
Voltage: up to 6,600 V

** NEMA or IEC designs*

HGF

LV / MV General Purpose TEFC Motors LV / MV Non-Sparking TEFC Motors LV / MV Increased Safety TEFC Motors



Output: up to 2,800 kW
Voltage: up to 11,000 V

** NEMA or IEC designs*

Electric Motors

W22Xd

LV Flameproof TEFC Motors



Output: up to 1,400 kW
Voltage: up to 1,100 V

** NEMA or IEC designs*

W22Xd

MV Flameproof TEFC Motors



Output: up to 1,600 kW
Voltage: up to 11,000 V

** NEMA or IEC designs*

Master Line

MV General Purpose Motors

MV Non-Sparking Motors

MV Increased Safety Motors

MV Pressurized Motors



Output: up to 50,000 kW
Voltage: up to 14,400 V
Cooling: open, air or water cooled

** NEMA or IEC designs*

Synchronous Motors

MV General Purpose Motors

MV Pressurized Motors



Output: up to 110,000 kW
Voltage: up to 14,400 V
Cooling: open, air or water cooled

** NEMA or IEC designs*

Automation Technologies



Industrial Systems **Enhancing Productivity**

Advanced built-in technology for speed variation; compact solutions for short-circuit protection and overload conditions; high short-circuit breaking capacity; reliability and precision on monitoring, operation and protection of electric motors; wide range of accessories and global Certifications. These are some of the features and benefits offered by WEG.



Counting on a team of senior engineers with extensive market and design experience, the company enjoys a comfortable position as a manufacturer and supplier of variable speed drives, soft-starters, motor control centers, motor starters, motor circuit breakers and an extensive series of motor control and protection products for the Oil & Gas applications.

MV Switchgear

The WEG MV Switchgear (MTW-03 and MTW-04 lines) are designed, assembled and tested to meet the strict international standards, such as IEC 62271 - 200 for voltages from 2.3 kV to 36 kV, while offering convenient assembly and maintenance features, as well as the flexibility to adapt to different characteristics required by Oil & Gas Industry.

- Voltage class: 7.2 kV; 12 kV; 17.5 kV; 24 kV; 36 kV
- Rated currents: 400 - 4,000 A
- Short-time withstand current: 25 kA; 31.5 kA; 40 kA; 50 kA
- Arc-resistant

LV Switchgear

The WEG LV Switchgear (LCW-03 line) are designed according to IEC 60439-1 to meet specifications of broad market segments for high operational current, high levels of short circuit interrupting rates and equipment protection complying with international quality and safety requirements. Designed with a high level of modularization, this product allows easy assembly, installation, maintenance and future expansions. The WEG Load Center is equipped with fixed, plug-in or removable circuit breakers and/or fixed switch-disconnector intended to supply MCCs loads and other electric panels.

- Voltage class: 690/1,000 V
- Rated currents: 6,300 A (horizontal busbar) 4,000 A (vertical busbar)
- Short-circuit current: 50 kA; 65 kA; 80 kA
- Option for arc-resistant

LV Motor Control Centers

The WEG LV MCCs (CCM-03 line) are designed with a high level of standardization. These products provide easy assembly, installation, maintenance, future expansions and interchangeability among units of the same MCC model, size and function. Certified by IEC 60439-1-TTA/PTTA with coordination type 1 and 2, WEG MCCs ensure high level of operation and maintenance reliability. They are available in fixed and/or removable units, and always complying with safety requirements of personnel and electrical installations.

- Voltage class: 690/1,000 V
- Rated currents: 3,150 A (horizontal busbar) 800 A (vertical busbar)
- Short-circuit current: 50 kA; 65 kA; 80 kA
- Option for arc-resistant

Automation Techn



MV Variable Speed Drives

MVW01

- Motor voltage: 2.3 kV; 3.3 kV; 4.16 kV and 6.9 kV
- Power ratings: 500 HP to 16,000 HP (400 kW to 12,000 kW)
- Input rectifier: 12, 18 and 24 pulses (for the 4.16 kV line) and 36 pulses (for the 6.9 kV line)

Main Advantages of WEG MVW01 VSD:

- Voltage Source (VSI) multilevel power topology (NPC 3/5 up to 4.16 kV and 5/9 up to 6.9 kV) with high dynamic performance
- Latest generation of power semiconductors with 6.5 kV IGBT's
- Use of dry-type plastic film power capacitors only (much longer life time than electrolytic capacitors)
- Reduced number of power and control components allowing high efficiency and reliability
- Withdrawable power cells for easy and fast servicing
- High security level with mechanical and electrical interlocking
- Phase shifting transformer for very low harmonics levels, higher incoming voltage installations and to eliminate common mode voltage problems increasing motor life time
- Flexibility for choosing the transformer (dry/oil type)
- Possibility of installing the transformer inside or outside the electrical room allowing energy and financial savings with the refrigeration system

MV Soft-Starters

SSW7000

- Motor voltage: 2.3 kV; 3.3 kV; 4.16 kV and 6.9 kV
- Power ratings: 750 HP to 4,500 HP (560 kW to 3,300 kW)
- Overload: 450% for 30 sec

Main Characteristics of WEG

SSW7000:

- Possibility of setting the best protection mode for the motor with thermal protections, alarm and fault notifications for current, voltage, temperature, etc.
- "Totally Flexible Torque Control" (TFTC) technology that uses WEG VFD's concept for controlling the motor torque
- High flexibility for choosing the control type: voltage ramp, current limiting, pump control and torque control (constant, linear or quadratic)
- Built-in input disconnect switch with medium voltage fuses, vacuum contactors (input and bypass) and independent withdrawable power modules (one per motor phase)
- Fieldbus communication protocols (DeviceNet, Profibus-DPV1, Ethernet/IP and Modbus-RTU, RS232 or RS485 interface)
- Keypad (HMI) with real time clock (RTC)
- Soft-PLC function with USB programming interface

LV Modular Variable Speed Drives

AFW11

- Complete cubicles units with CFW11M modules or standalone CFW11, 6 or 12-Pulse input rectifiers or even regenerative (AFE). The CFW11M is ranging from 370 kW (500 HP) to 2,000 kW (2,500 HP) with line voltage from 380 V to 690 V. The CFW11W with water cooler refrigeration is available up to 2,300 kW (2,800 HP) for 480 V or 2,800 kW (3,800 HP) for 690 V.
- Easy servicing
 - Configurable up to 5 power units
 - DC supplied by an input rectifier
 - Compact book format (width much smaller than the depth)

LV Variable Speed Drives

The CFW is a drive designed for the control of squirrel cage induction motors and permanent magnet motors. It can be used in a wide range of applications, since it is designed for running on either Normal or Heavy Duty loads. Its performance is excellent, providing increased productivity and an improvement in the quality of the process in which it is used.

CFW11 - System Drive

- 1.1 to 55 kW - 1.5 to 75 HP - 200-240 V ac - Three-phase
- 1.5 to 1,600 kW - 2 to 2,000 HP - 380-480 V ac - Three-phase
- 1.5 to 2,000 kW - 3 to 2,500 HP - 500-690 V ac - Three-phase
- Control: V/F, VVW or Vector
- Conformal coating
- Soft-PLC built-in
- Inductors in DC bus (IEC61000-3-12 - Harmonics)



CFW700 - General Purpose Drive

- 1.1 to 55 kW - 1.5 to 75 HP - 220-240 V - Three-phase
- 1.5 to 132 kW - 2 to 175 HP - 380-480 V - Three-phase
- 1.5 to 110 kW - 2 to 150 HP - 500-600 V - Three-phase
- Control: V/F, VVW or Vector
- Conformal coating
- Soft-PLC built-in
- Inductors in DC bus (IEC61000-3-12 - Harmonics)

LV Soft-Starters

Soft-Starters are static starters that accelerate, decelerate and protect three-phase induction motors. The control of the voltage applied to the motor by means of adjustments to the firing angle of thyristors allows the soft-starter to start and stop an electric motor smoothly.

SSW06 - Heavy Duty Soft- Starter

- 2.2 to 2,000 kW - 3 to 1,250 HP - 220-575 V ac - Three-phase (3 cables)
- 1.5 to 2,000 kW - 3 to 2,500 HP - 500-690 V ac - Three-phase
- 2.2 to 1,800 kW - 3 to 2,000 HP - 220-575 V ac - Three-phase (6 cables)
- Torque control (1, 2 or 3 points)
- Conformal coating
- Built-in bypass
- Soft-PLC built-in
- Inside delta connection

Control and Protection of LV Electric Motors

WEG's wide expertise in the design and manufacture of electric motors, combined with the high technology employed and state-of-the-art

manufacturing procedures, resulted in a compact, modular and extremely reliable line of products dedicated to the control and protection of electric motors.

- Contactors and overload relays up to 800 A (AC-3);
- Motor protective circuit breakers up to 100 A (breaking capacity up to 100 kA);
- Type 1 or type 2 coordination starters according to IEC 60947-4-1
- Type E or type F combination starters according to UL508
- Enclosed starters (plastic or metallic enclosures) - IEC and UL versions;
- Customized starters for OEM applications;
- Complete range of pushbuttons and pilot lights (IP66 degree of protection)
- Electronic relays (timer and monitoring relays)

SRW Smart Relay - Low Voltage Electric Motor Management System

Provides reliability and precision on management, operation and protection of LV electric motors with state-of-the-art technology and network communication capabilities.

- Full motor operation monitoring and protection through current (up to 5,000 A) and voltage (up to 690 V) measurements
- Compact and modular design
- Digital expansion unit increasing the number of digital inputs and outputs
- Multiple operation modes including PLC functions
- Easy network module change via an

exclusive drawer system (ModBus, DeviceNet, Profibus modules)

- Programming available through PC (via USB communication) or HMI
- Free WLP (WEG Ladder Programming) programming software

Electrical Circuit Protection

WEG offers a full range of dedicated solutions for electrical circuit protection against overload and short circuit, through a state-of-the-art wide range of circuit breakers.

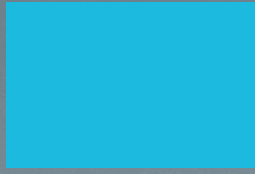
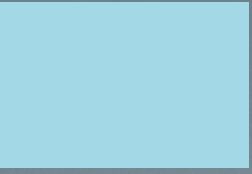
- Miniature circuit breakers up to 100 A (breaking capacity of 10 kA A CC to IEC60898 and IEC60947-2)
- Molded case circuit breakers up to 1,600 A (breaking capacity up to 80 kA)
- Air circuit breakers up to 6,300 A (breaking capacity of 100 kA)

Power Factor Capacitors

Manufactured with self-healing metallized polypropylene film and PCB free, WEG power factor correction capacitors offer protection against internal overpressure and dielectric losses lower than 0.4 W/kVAr.

- UCW Line - Single-Phase Capacitive Units (up to 10 kVAr)
- UCWT Line - Three-Phase Capacitive Units (up to 25 kVAr)
- CWMC - Contactors for Switching Capacitors (up to 50 kVAr)
- MCW Line - Three-Phase Capacitor Module (up to 60 kVAr)

Power Generation



Combined Flexible Products for Sustainable Energy

WEG has the expertise to provide integrated energy solutions to drive all plant equipment. The products are designed to the highest quality standards and state-of-the-art technology demanded by the Oil & Gas Industry.



WEG is a world leading company in the manufacture of power generation equipment and has the technological capability and capacity to offer the finest solutions for Oil & Gas applications. Counting on modern and fully-equipped manufacturing facilities and a team of experienced and highly qualified engineers, the company has the expertise to provide reliable products for the industry.

Power Generation



WEG's extensive experience in the manufacture of synchronous generators, added to modern design, production capacity and testing facilities have resulted in competitive and reliable products designed to the most respected industry standards such as API 546.

ST40 Synchronous Generators

- Ratings: up to 62,500 kVA at 1,800 RPM or up to 50,000 kVA at 1,500 RPM
- Voltage: up to 14,400 V
- Cooling: open, air or water cooled
- Brushless design with electronic voltage regulator
- Designed for safe or classified environments
- NEMA or IEC designs



ST20 Synchronous Generators

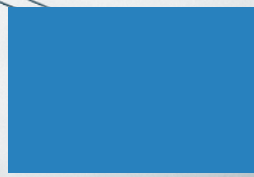
- Ratings: up to 150,000 kVA at 3,600 RPM or up to 120,000 kVA at 3,000 RPM
- Voltages: up to 14,400 V
- Cooling: open, air or water cooled
- Brushless design with electronic voltage regulator
- Designed for safe or classified environments
- NEMA or IEC designs

SG10 Synchronous Generators (for Alternators Sets)

- Ratings: up to 25,000 kVA
- Voltages: up to 14,400 V
- Degree of protection: IP21 to IP56W
- Number of poles: up to 26
- Brushless design with electronic voltage regulator
- Designed for safe or classified environments
- NEMA or IEC designs



Power Transmission & Distribution



Excellence in Power Supply Technologies

Excellence in power supply technologies associated with the use of high quality raw material and product customization differentiate the WEG supplies of Transformers and Substations for the Oil & Gas Industry. Over 35,000 MVAs per year represents the reliable manufacturing capacity of WEG in the area of transformers, substations and high voltage power transmission and distribution equipment. This capacity is the result of a highly verticalized production process, providing flexibility and short delivery time.



Dry Transformers

Epoxy insulated Dry Transformers provides higher safety level, less space and reduced installation and maintenance costs. This product line offers solutions for all types of environments. The vacuum encapsulation process and the quality of the resin prevent partial discharges and significantly increases the transformer lifespan. Available in outputs from 300 to 20,000 kVA, voltage classes up to 36.2 kV, with degree of protection up to IP55.



Oil Transformers

Reduction of weight and dimensions, types of insulating oils, longer lifespan and monitoring systems are just some of the items evaluated by WEG's technical team to develop oil transformers to offer customers top level solutions. The portfolio includes a complete line of distribution and power transformers up to 550 kV, insulated with mineral oil, reducing the equipment cost, or vegetal oil, significantly reducing environmental impacts.



Conventional Substations

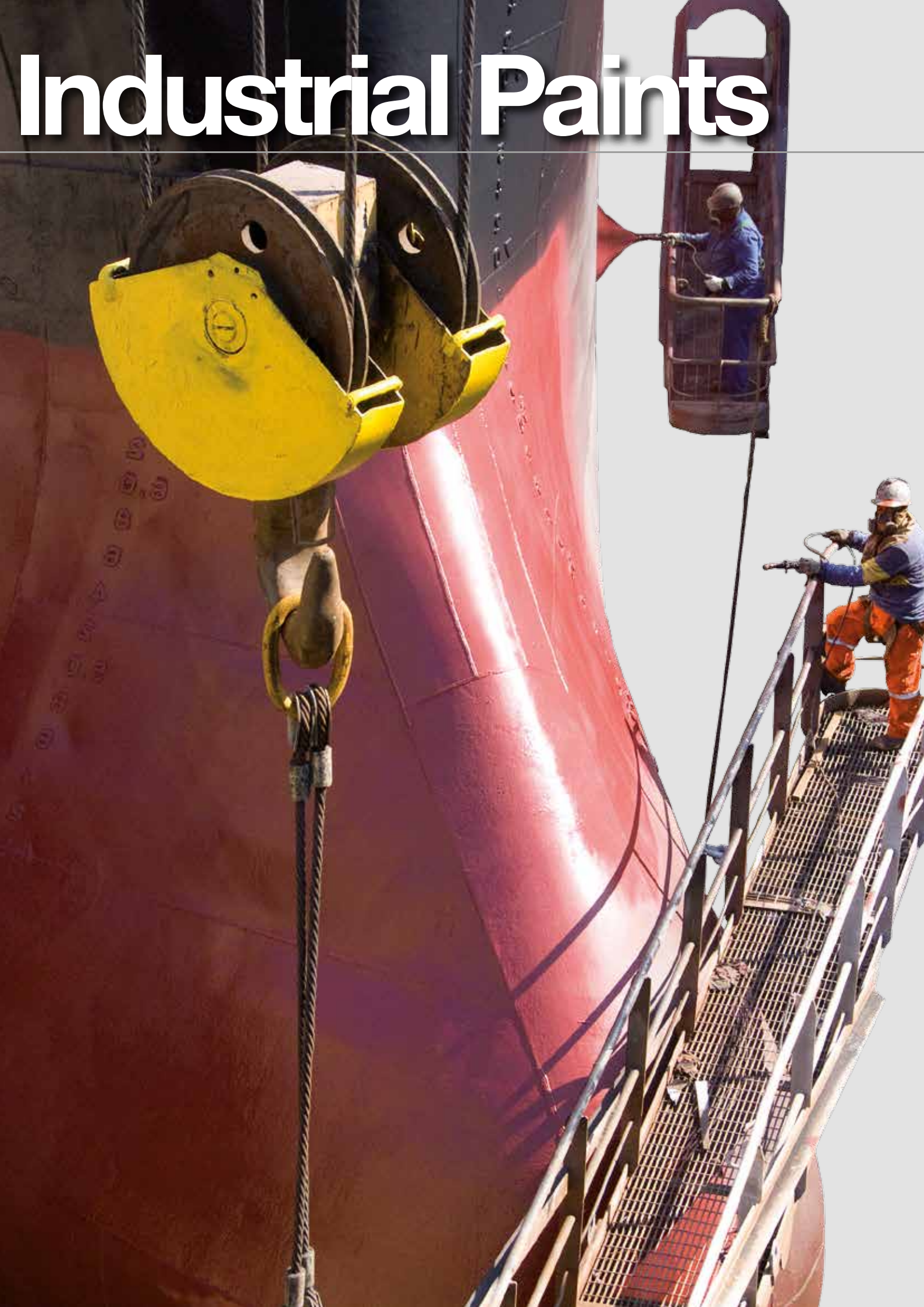
The substation division counts on a qualified and experienced team of engineers which are in charge of the development and design of turnkey substations - from prospection, definition of a specific solution to the customer and project management, to manufacture and assembly. It has proven experience, having already delivered and powered over 350 substations in voltages up to 550 kV.



Mobile Transformers and Substations

Developed with the most advanced components in the market, the Mobile Solutions (Transformers and Substations) ensure dynamic operation and agility, being easy to be installed wherever required. They are used for emergencies and scheduled maintenances in power transformers and substations, allowing the jobs to be carried out without interrupting the power supply.

Industrial Paints



Industrial Paints Providing Full Protection

WEG has the capability of supplying a complete anticorrosive and antifouling range of products for several applications for the Oil & Gas Industry including tanking farms, crude oil tankers, FPSOs and PSVs. Our line of products ranges from shop primer for temporary protection for steel plates to high performance antifouling with durability up to 5 years without maintenance shutdown operation.

Our comprehensive painting solutions include an extensive line of special products such as:

- Shop primers for initial steel protection
- High Thixotropy Epoxy Primer for stripe coat
- Epoxy Primers from WET SURFACE Line (Surface Tolerant)
- Epoxy Primers from TAR FREE Line
- High Hardness Epoxy Primers for Decks (Antiskid)
- Epoxy and Vinyl Sealers
- Epoxy for contact with Potable Water
- Polyurethane Top Coats

Product Certifications



The NORSOK Standards are developed by the Norwegian petroleum industry to ensure adequate safety, value adding and cost effectiveness for Oil industry developments and operations. Furthermore, NORSOK standards are as far as possible intended to replace oil company specifications and serve as references in the authorities regulations.



IMO is the United Nations Specialized agency with responsibility for the safety and security of shipping and the prevention of marine pollution by ships.



Experience

WEG has already supplied more than 4 million liters of paint to Petrobras meeting very demanding petroleum standards. This quantity is enough to get a 14 meters wide road painted for more than 2,300 kilometers, distance from Houston to New York.

After Sales Support and Service



Whenever you need technical or commercial support,

Count on us!



We are **there for you!**



- 32 Subsidiaries strategically located in key markets
- Distributors and agents in about 85 countries
- Over 1,250 Authorized Service Centers covering all five continents
- Genuine replacement parts available for rightaway delivery

Services Available

- Factory repairs and refurbishments
- Site repairs and troubleshooting
- Installation and start-up service
- Inspection and maintenance
- Warranty support
- Technical and commercial training (at the factory or on-site)
- Field support linked to engineering

Global References

(2010-2013)

Project Name

- 1 - Puesto Hernández - Luján de Cuyo Pipeline
- 2 - Ensenada Petrochemical Complex
- 3 - La Plata Refinery
- 4 - Terminal del Este
- 5 - Triunfo Second Butadiene Unit
- 6 - Refinaria Alberto Pasqualini (REFAP) Expansion
- 7 - Refinaria Pres. Getúlio Vargas (REPAR) Expansion
- 8 - Refinaria de Capuava (RECAP) Expansion
- 9 - Refinaria de Paulínia (REPLAN) Expansion
- 10 - COMPERJ Refinery and Petrochemical Complex
- 11 - Terminal de Cabiúnas (TECAB)
- 12 - Refinaria Gabriel Passos (REGAP) Expansion
- 13 - P66 FPSO (Lula Alto)
- 14 - P67 FPSO (Lula Central)
- 15 - P68 FPSO (Lula Sul)
- 16 - P69 FPSO (Lula Norte)
- 17 - P70 FPSO (Lula Extremo Sul)
- 18 - P71 FPSO (Iara Horst)
- 19 - P72 FPSO (Iara Noroeste)
- 20 - P73 FPSO (Carcará)
- 21 - P74 FPSO (Franco)
- 22 - FPSO Cidade de São Paulo (Sapinhoá)
- 23 - FPSO Cidade de Paraty (Lula Nordeste)
- 24 - FPSO Cidade de Ilhabela (Sapinhoá Norte)
- 25 - FPSO Cidade de Itaguaí (Iracema Norte)
- 26 - FPSO Cidade de Mangaratiba (Cernambi Sul)
- 27 - FPSO Cidade de Maricá (Lula Alto)
- 28 - FPSO Cidade de Saquarema (Lula Central)
- 29 - OSX-2 FPSO (Tubarão Azul)
- 30 - OSX-3 FPSO (Tubarão Martelo)
- 31 - WHP-1 (Tubarão Azul)
- 32 - P58 FPSO (Parque das Baleias)
- 33 - P61 TLWP (Papa-Terra)
- 34 - P62 FPSO (Roncador)
- 35 - P63 FPSO (Papa-Terra)
- 36 - Três Lagoas Nitrogen Fertilizer (UFN-III)
- 37 - Refinaria Landulpho Alves (RLAM) Expansion
- 38 - Refinaria do Nordeste (RNEST)
- 39 - Refinaria de Manaus (REMAN) Expansion
- 40 - Gran Chaco
- 41 - Margarita Gas Field

- 42 - Esmeraldas Refinery
- 43 - Carito Reservoir (PIGAP III) - Monagas
- 44 - Anaco and Pto Pumping Stations (RBI & RBII)
- 45 - Refineria Puerto La Cruz
- 46 - Puerto Bahia Oil Terminal
- 47 - Ethylene XXI
- 48 - Minatitlan Refinery
- 49 - West Texas Cryogenic Processing Plant
- 50 - USGC HDPE Project

- 51 - Lake Charles Chemical Complex
- 52 - Iowa Fertilizer Plant
- 53 - Lima Ammonia Revamp Project
- 54 - Utica Shale Pipeline
- 55 - Horizon Oil Sands
- 56 - Terra Nova FPSO
- 57 - Durban Refinery
- 58 - Secunda CTL
- 59 - Rabi Field



- | | | |
|--|--|--|
| 60 - Benita FPSO (ASENG) | 79 - Sahmah Booster Station | 98 - Hydrogeneration Peroxide Project |
| 61 - El Merk Central Processing Facility | 80 - Uthmaniyah Carbon Dioxide Injection Plant | 99 - Wuhai Xilai Feng LNG |
| 62 - Mellitah Gas Compression Station | 81 - Juaymah Gas Plant | 100 - Yulin Yuanheng LNG |
| 63 - Skikda Refinery - Rehabilitation | 82 - Saudi Elastomers Project - Halobutyl Unit | 101 - Jingbian Xingyuan LNG |
| 64 - Refinaria do Porto | 83 - Shedgum GOSP 3 | 102 - Enping Oilfields Joint Development |
| 65 - Refineria de Sines | 84 - Wasit Project | 103 - Nylon 6,6 Phase 1 HMD Project |
| 66 - Val d'Agri Oil Field | 85 - Al Ahmadi Refinery | 104 - Shuangxin LNG |
| 67 - Izmit Refinery | 86 - Shuaiba Refinery | 105 - Guangyuan LNG |
| 68 - Petrobrazil Refinery Modernisation | 87 - New GC-16 - West Kuwait | 106 - Van Phong Petroleum Terminal |
| 69 - Greater Stella Area Development | 88 - Zubair Oil Field | 107 - Bintulu LNG - Train 9 |
| 70 - Jazan Refinery | 89 - Badra Central Processing Facilities II | 108 - TAN Burrup |
| 71 - Amin Water Flood | 90 - Kuibyshev Azot Oxanone Plant | 109 - Australia Pacific LNG |
| 72 - NIMR Production Station | 91 - Novokujbyshevsk Refinery | 110 - Gladstone LNG |
| 73 - Karim West Water Flood | 92 - Nizhegorodnefteorgsintez CCR-2 | 111 - Queensland Curtis LNG |
| 74 - GNR Water Flood | 93 - RSAE Neftekhim Salavat | 112 - Lytton Refinery |
| 75 - Shaybah Project | 94 - Permneftorgsintez Hydrogen Prod. Plant | |
| 76 - Saih Rawl Depletion Compression Phase 2 | 95 - Vankor Oil Field | |
| 77 - Al Noor Oil Field | 96 - Sakhalin Project | |
| 78 - Abu Tubul Gas Plant | 97 - Khabarovsk Refinery | |

WEG Worldwide Operations

ARGENTINA

WEG EQUIPAMIENTOS
ELECTRICOS
San Francisco - Cordoba
Phone: +54 3564 421 484
info-ar@weg.net
www.weg.net/ar

WEG PINTURAS - Pulverlux
Buenos Aires
Phone: +54 11 4299 8000
tintas@weg.net

AUSTRALIA

WEG AUSTRALIA
Victoria
Phone: +61 3 9765 4600
info-au@weg.net
www.weg.net/au

AUSTRIA

WATT DRIVE - WEG Group
Markt Piesting - Vienna
Phone: +43 2633 404 0
watt@wattdrive.com
www.wattdrive.com

BELGIUM

WEG BENELUX
Nivelles - Belgium
Phone: +32 67 88 84 20
info-be@weg.net
www.weg.net/be

BRAZIL

WEG EQUIPAMENTOS ELÉTRICOS
Jaraguá do Sul - Santa Catarina
Phone: +55 47 3276-4002
info-br@weg.net
www.weg.net/br

CHILE

WEG CHILE
Santiago
Phone: +56 2 784 8900
info-cl@weg.net
www.weg.net/cl

CHINA

WEG NANTONG
Nantong - Jiangsu
Phone: +86 0513 8598 9333
info-cn@weg.net
www.weg.net/cn

COLOMBIA

WEG COLOMBIA
Bogotá
Phone: +57 1 416 0166
info-co@weg.net
www.weg.net/co

FRANCE

WEG FRANCE
Saint Quentin Fallavier - Lyon
Phone: +33 4 74 99 11 35
info-fr@weg.net
www.weg.net/fr

GERMANY

WEG GERMANY
Kerpen - North Rhine Westphalia
Phone: +49 2237 9291 0
info-de@weg.net
www.weg.net/de

GHANA

ZEST ELECTRIC GHANA
WEG Group
Accra
Phone: +233 30 27 664 90
info@zestghana.com.gh
www.zestghana.com.gh

INDIA

WEG ELECTRIC INDIA
Bangalore - Karnataka
Phone: +91 80 4128 2007
info-in@weg.net
www.weg.net/in

WEG INDUSTRIES INDIA

Hosur - Tamil Nadu
Phone: +91 4344 301 501
info-in@weg.net
www.weg.net/in

ITALY

WEG ITALIA
Cinisello Balsamo - Milano
Phone: +39 02 6129 3535
info-it@weg.net
www.weg.net/it

JAPAN

WEG ELECTRIC MOTORS
JAPAN
Yokohama City - Kanagawa
Phone: +81 45 550 3030
info-jp@weg.net
www.weg.net/jp

MALAYSIA

WATT EURO-DRIVE - WEG Group
Shah Alam - Selangor
Phone(s): 603 78591626
info@wattdrive.com.my
www.wattdrive.com

MEXICO

WEG MEXICO
Huehuetoca
Phone: +52 55 5321 4231
info-mx@weg.net
www.weg.net/mx

VOLTRAN - WEG Group

Tizayuca - Hidalgo
Phone: +52 77 5350 9354
www.voltran.com.mx

NETHERLANDS

WEG NETHERLANDS
Oldenzaal - Overijssel
Phone: +31 541 571 080
info-nl@weg.net
www.weg.net/nl

PERU

WEG PERU
Lima
Phone: +51 1 472 3204
info-pe@weg.net
www.weg.net/pe

PORTUGAL

WEG EURO
Maia - Porto
Phone: +351 22 9477705
info-pt@weg.net
www.weg.net/pt

RUSSIA and CIS

WEG ELECTRIC CIS
Saint Petersburg
Phone: +7 812 363 2172
info-ru@weg.net
www.weg.net/ru

SOUTH AFRICA

ZEST ELECTRIC MOTORS
WEG Group
Johannesburg
Phone: +27 11 723 6000
info@zest.co.za
www.zest.co.za

SPAIN

WEG IBERIA
Madrid
Phone: +34 91 655 30 08
info-es@weg.net
www.weg.net/es

SINGAPORE

WEG SINGAPORE
Singapore
Phone: +65 68589081
info-sg@weg.net
www.weg.net/sg

SCANDINAVIA

WEG SCANDINAVIA
Kungsbacka - Sweden
Phone: +46 300 73 400
info-se@weg.net
www.weg.net/se

UK

WEG ELECTRIC MOTORS U.K.
Redditch - Worcestershire
Phone: +44 1527 513 800
info-uk@weg.net
www.weg.net/uk

UNITED ARAB EMIRATES

WEG MIDDLE EAST
Dubai
Phone: +971 4 813 0800
info-ae@weg.net
www.weg.net/ae

USA

WEG ELECTRIC
Duluth - Georgia
Phone: +1 678 249 2000
info-us@weg.net
www.weg.net/us

ELECTRIC MACHINERY

WEG Group
Minneapolis - Minnesota
Phone: +1 612 378 8000
www.electricmachinery.com

VENEZUELA

WEG INDUSTRIAS VENEZUELA
Valencia - Carabobo
Phone: +58 241 821 0582
info-ve@weg.net
www.weg.net/ve

For those countries where there is not a WEG own operation, find our local distributor at www.weg.net.



WEG Group
Jaraguá do Sul - SC - Brazil
Phone: +55 47 3276 4000
info-br@weg.net
www.weg.net

