

Life Is On



Find out more about EcoStruxure for Energies and Chemicals
se.com

Schneider Electric

35 rue Joseph Monier
92500 Rueil-Malmaison, France
Tel : +33 (0)1 41 29 70 00

© 2022 Schneider Electric. All Rights Reserved. Life Is On | Schneider Electric and EcoStruxure are trademarks and the property of Schneider Electric SE, its subsidiaries and affiliated companies. 998-22058453

EcoStruxure™
Innovation At Every Level

EcoStruxure™ for Energies and Chemicals

Sustainability, efficiency, resilience
along the value Chain



se.com

Life Is On



Oil & gas companies' capabilities are valuable for new low-carbon energy system

Building New Energy Transition Business

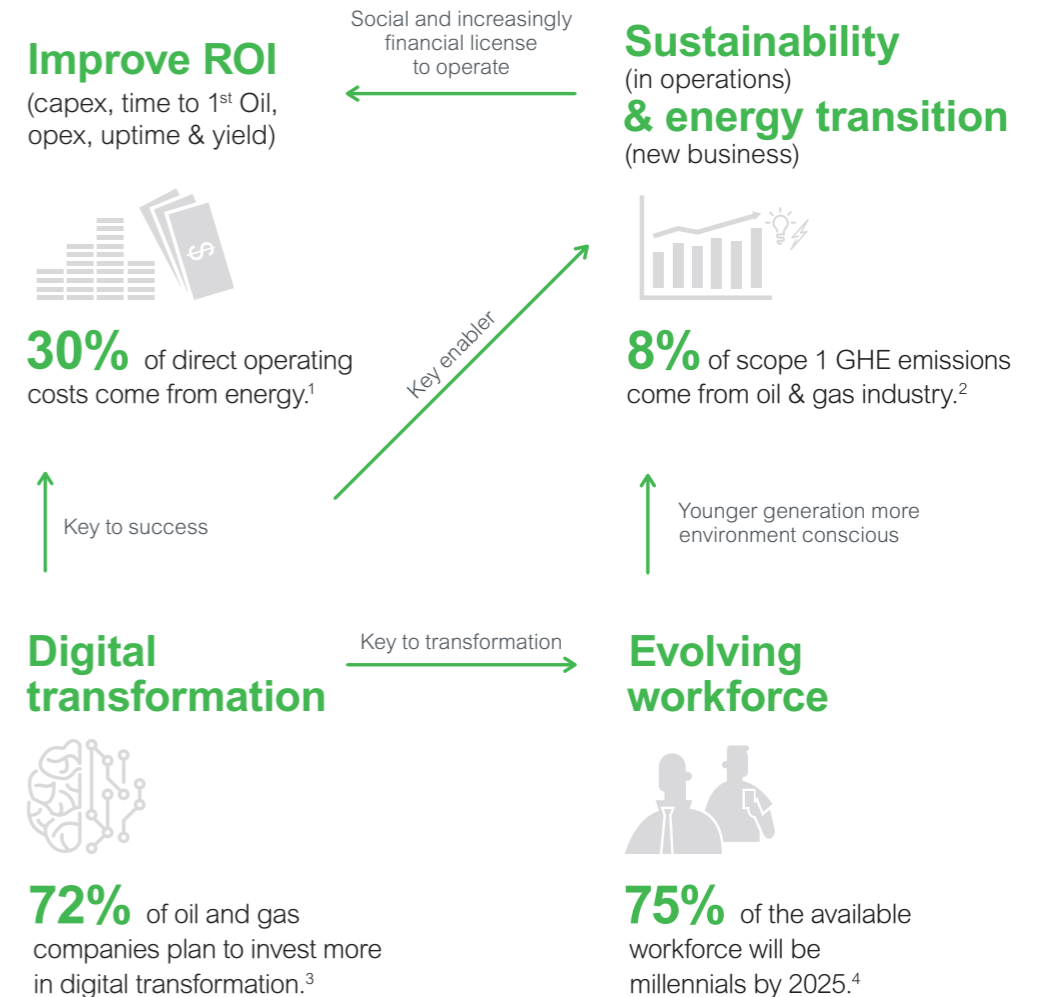


Decarbonizing Operations (green & brownfield)



The Oil, Gas & Petrochemicals industries mega trends reinforced by the latest crisis...

What is on top of your mind



¹Deloitte, "Tracking the Trends 2022"

²<https://www.mckinsey.com/industries/oil-and-gas/our-insights/the-future-is-now-how-oil-and-gas-companies-can-decarbonize>

³https://www.accenture.com/_acnmedia/PDF-117/Accenture-Trends-Digital-Investment-Oil-Gas-Infographic.pdf

⁴EY

Our technologies enable the digital transformation of Industrial Automation and Energy Management

EcoStruxure delivers on four key integrations

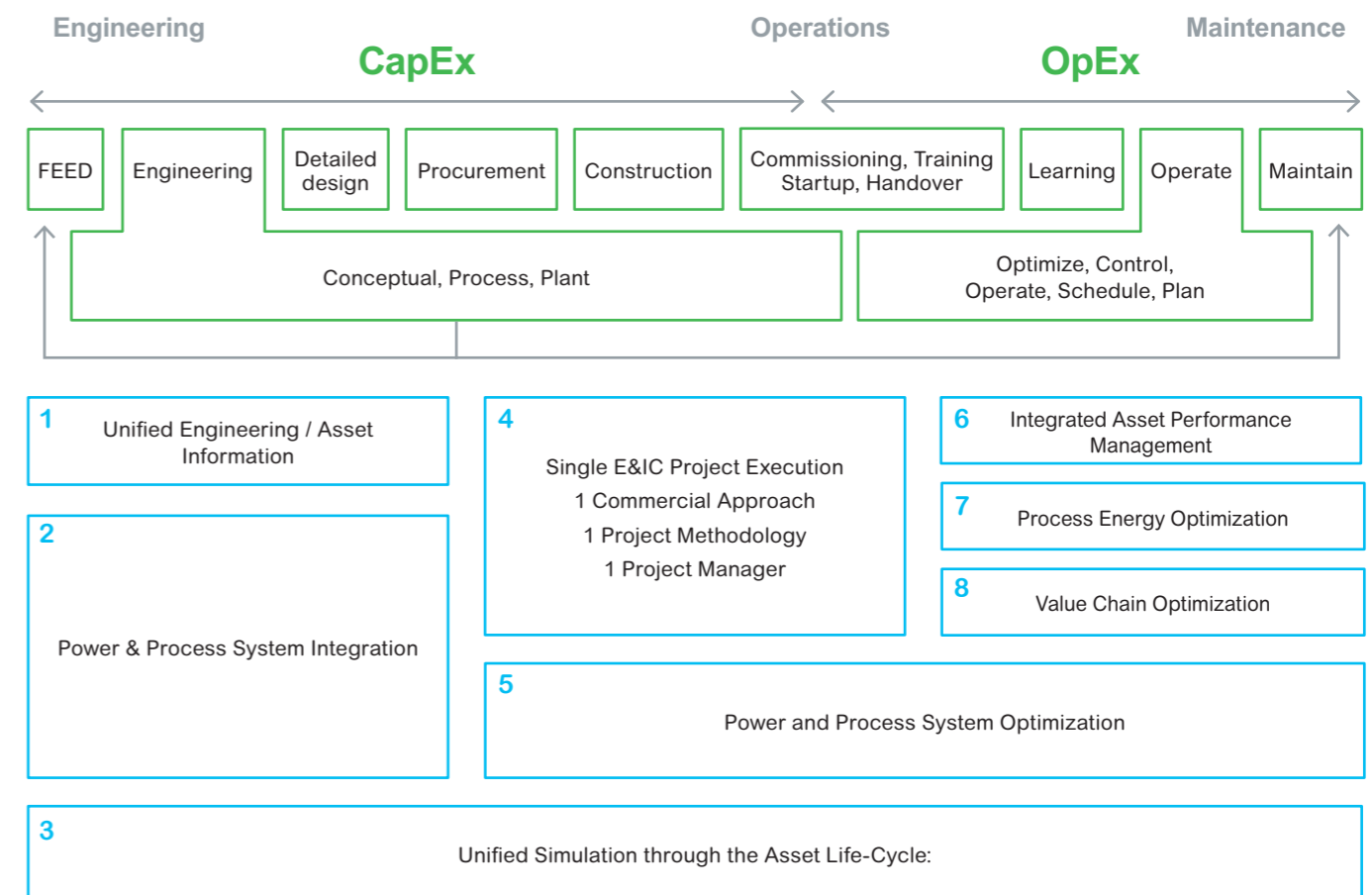
EcoStruxure™
Innovation At Every Level for Energies and Chemicals

- 1 Energy + Automation
- 2 End Point Cloud
- 3 Design & Build Operate & Maintain
- 4 From **site by site** **Integrated management**

Eight Integrated Power and Process Strategies, from Start to End of Life

To make the digital integration of power and process systems possible, Schneider Electric teamed up with strategic partner AVEVA to deliver EcoStruxure™ Power and Process. By combining our extensive expertise in energy management and automation with AVEVA's industry-leading industrial software expertise, we are revolutionizing power and process management for our customers.

Taking a TOTEX approach for industrial facilities to deliver a lifetime of value with Eight Integrated Power and Process Strategies, from start to end of life.



Electric makes energy green.
 Digital builds a smart future.
 Automation makes the
 process efficient.

20%

El&C CapEx
 reduction

15%

Downtime
 reduction

10%

Process Energy
 usage improvement

3 pts

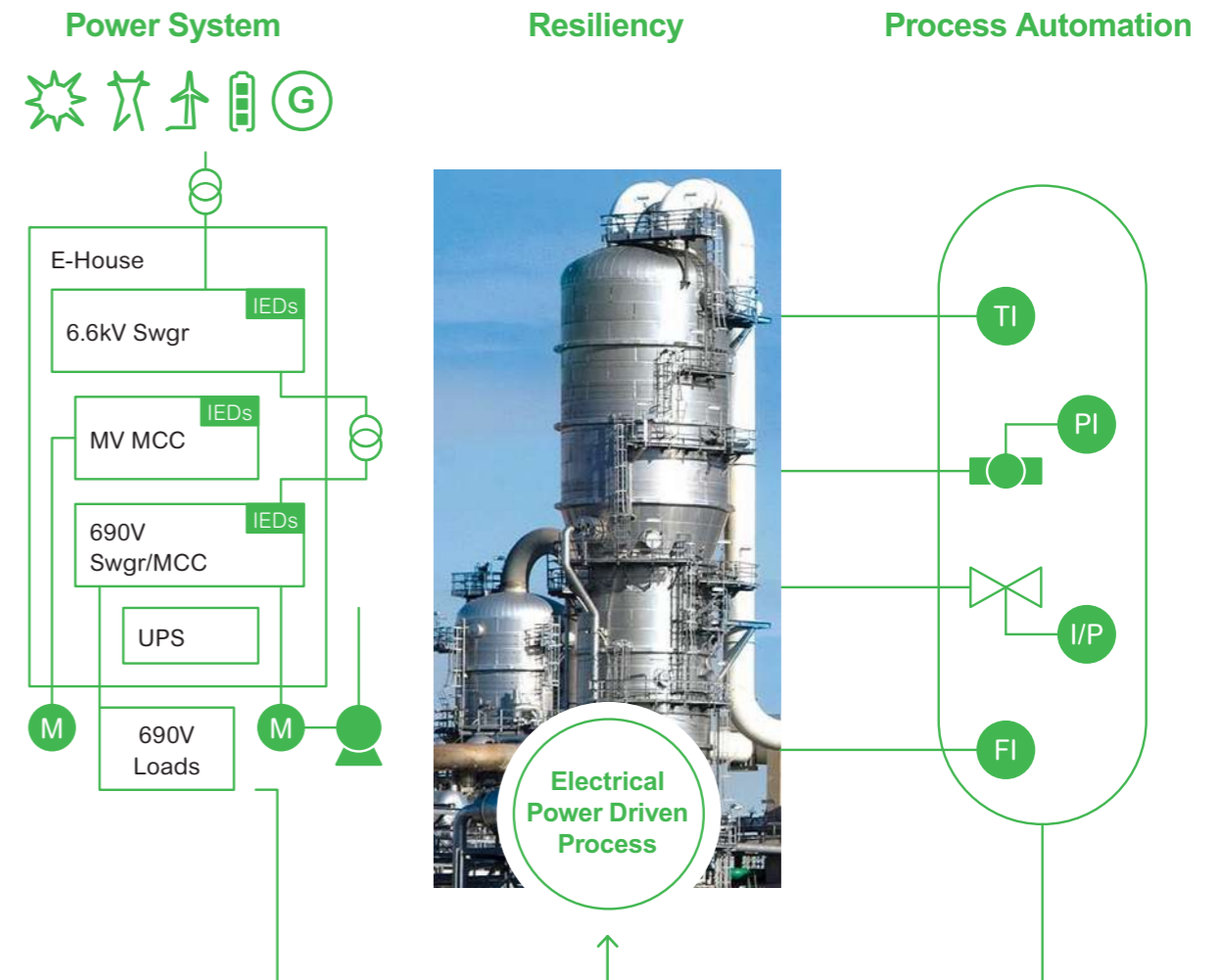
Profitability
 improvement

Power and process integration

Working with our customers, we have brought together the power of the Schneider Electric and AVEVA portfolios into EcoStruxure Power and Process.

This approach presents an opportunity to rethink the synergies of converged operations from the enterprise to site accelerated by digital.

Unifying traditionally separate operating silos and driving synergies that were previously untapped delivers major benefits from design to build to operate and maintain.



Connecting field data to enterprise systems and a cloud-based integrated operations center

EcoStruxure™ is IoT-enabled, open, and interoperable architecture that creates collaborative environments that connect field-enterprise



Onshore Production

Offshore Production

LNG and Gas Processing

Rafinery and Petrochemicals

Pipelines and Terminals

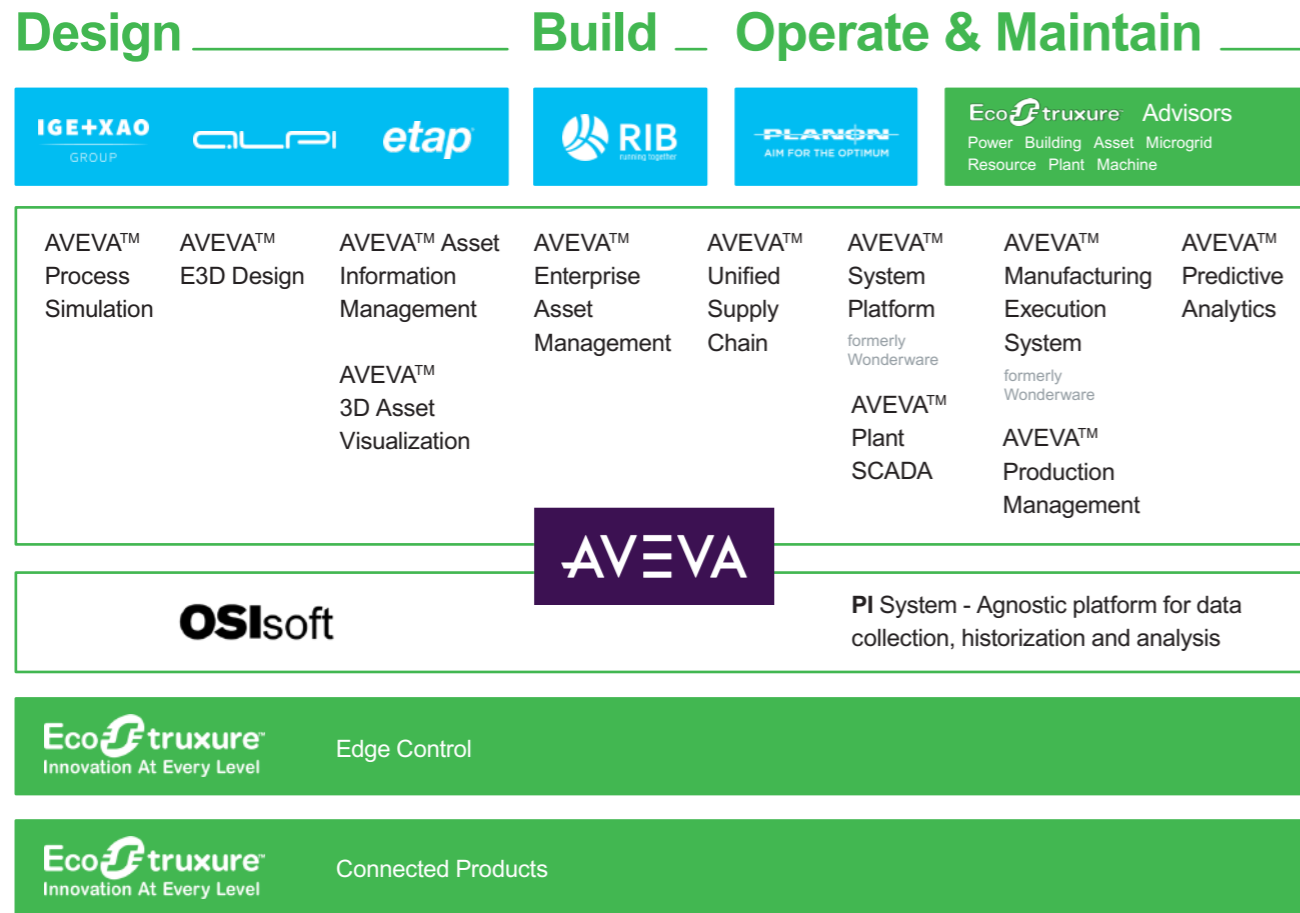
New energies



* The Schneider Electric industrial software business and AVEVA have merged to trade as AVEVA Group plc, a UK listed company. The Schneider Electric and Life is On trademarks are owned by Schneider Electric and are being licensed to AVEVA by Schneider Electric.

An integrated software approach that leverages the electrical and process digital twin

We have today a unique portfolio of tools across the lifecycle to enable true efficiency gains from inception to design to operations to maintenance.



©2022 Schneider Electric. All Rights Reserved
AVEVA and the AVEVA logo are a trademark or registered trademark of AVEVA Group plc in the U.S. and other countries



One Model for Life

A model is an asset for the company and delivers value throughout the project lifecycle. A model once developed can be used, re-used, upgraded and adapted as necessary depending upon the needs of the client without changing software or underlying platform

Enter at any stage

Value from this approach can be derived at every stage and client can enter at any stage to realize value

Life time of applications

Applies from engineering design through full plant life cycle including operator training to RTO. Achieve faster on-spec design production by eliminating design errors and overdesign

New energy transition business needs new integrated approach



Financial Context



Engineering information with Operational context



Energy Management



Real-time Operational Displays



Maintenance Context



Interface to specific applications (Operating window, HSE etc.)



Process Engineering Integration



P&ID Data (1D, 2D, 3D)



APM: Predictive Analytics

Schneider Electric is a sustainability role-model

Carbon Pledge 1.5°C climate objective

2025

Carbon neutral operations (with CO₂ offsets)

2030

Supplier decarbonization
Net-zero CO₂ operations (no CO₂ offsets)
Innovation for lower induced CO₂

2040

End-to-end carbon neutral value chain (carbon neutral products, with CO₂ offsets)

2050

Net-zero CO₂ supply chain (no CO₂ offsets)



CLIMATE GROUP



Best-in-Class Companies

follow a 3-steps approach from strategy setting to execution to deliver results in line with climate ambition

3-steps approach covering 3 tiers of decarbonization measures

Low hanging fruits
relying on energy efficiency, digitization

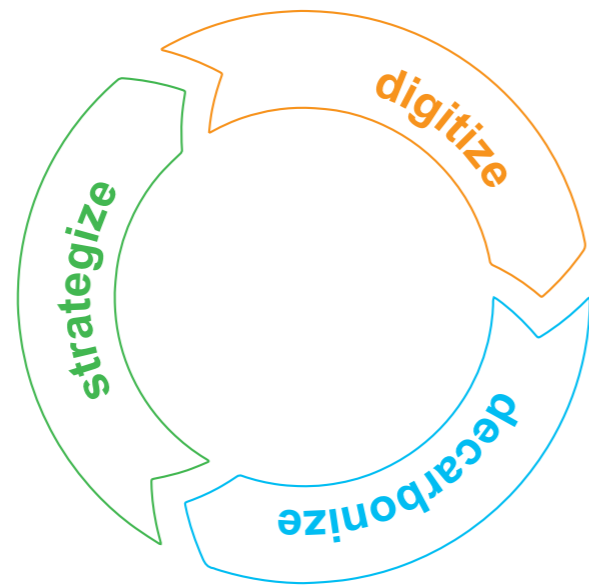
typical CO₂ benefits up to 25%

Paradigm change in your design
eg Electrification +PPA, unmanning typical

CO₂ benefits 25% to 100%

Major projects
eg Green H₂, CCUS, deploy your own renewable farm+ storage

achieve your CO₂ reduction target



Make the most of a high efficiency integrated power and automation environment to build a sustainable energies and chemicals business

